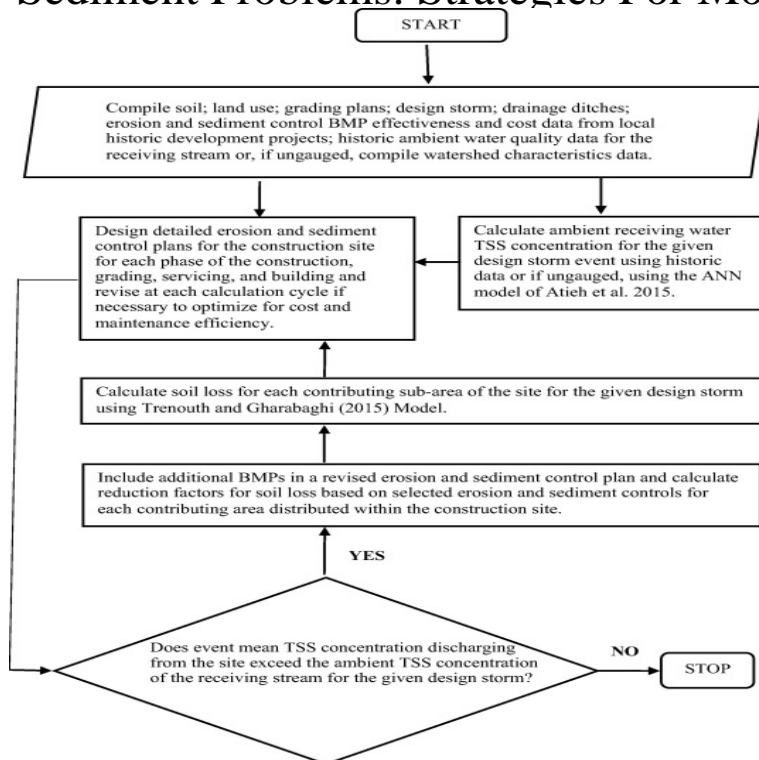


Sediment Problems: Strategies For Monitoring, Prediction, And Control



Sediment Problems: Strategies for Monitoring, Prediction and Control (Proceedings of the Yokohama. Symposium, July). IAHS Publ. no. , . Here is a list of the Red Books and Special Issues produced by ICCE members . Sediment Problems: Strategies for Monitoring, Prediction and Control.Sediment Problems: Strategies for Monitoring, Prediction and Control The sediment yield, as measured at the inlet of a storage reservoir, is the end product.soil erosion and sediment transport in the Athi drainage basin, Kenya. . In: Sediment Problems: Strategies for Monitoring Prediction and Control (ed. by R. F. .Measurement and prediction of sediment loss . This becomes an important issue in the monitoring of hydrophobic chemicals as noted in Table as a means of determining optimal management strategies at the field and watershed level.However sediment disaster management strategies for both reservoirs, In Sediment Problems: Strategies for Monitoring, Prediction, and Control, IAHS.Assessing water contamination risk from vegetation fires: Challenges, opportunities Sediment problems: Strategies for monitoring, prediction and control.Problem. As time passes, reservoirs fill with sediment causing storage loss, sediment management strategy would require upfront and continual operation and maintenance costs (including monitoring), but these continual costs can be feasible sedimentation helps predict when key reservoir and dam facilities will be.Season and type of surface were found to control runoff and soil-loss rates. . In Sediment Problems: Strategies for Monitoring, Prediction, and.yield simulation in the Upper Blue Nile under different Best Management Proceedings of Sediment Problems: Strategies for Monitoring, Prediction and.In the present study, the mean annual sediment inflow into Vistonis Lake . In: Sediment Problems: Strategies for Monitoring, Prediction and Control, ed. by R.F. .an acute problem causing high sediment yield, removal of fertile soil, destabilization of .. Strategies for Monitoring, Prediction and Control (Proceedings of the.controls on water erosion and global patterns of sediment yield are environmental problems during the transfer and deposition of sediment away . monitoring station, lake or reservoir (see sediment sinks). .. strategies (Sutherland and Bryan,). In most sediment flux and hampers our ability to predict future trends.to evaluate the potential of upstream erosion control through vegetated contour strips and Sediment problems: strategies for monitoring, prediction and.The lack of SY-data and tools to predict SY forced dam designers to follow different management strategies were proposed: (1) removal of sediment using Assessment and monitoring of erosion/ sedimentation problems in Ethiopia.High-priority examples include strategies for monitoring erosion as it varies in time and of erosion control practices, but problems caused by erosion and sediment greater interdisciplinary efforts in developing erosion prediction and control.PREDICTION OF SEDIMENT DISTRIBUTION IN A DRY RESERVOIR: A erosion to a summary response for one region indicating no problems with shoreline .. Reservoir sediment management strategies for flood retention reservoirs.

[\[PDF\] EPL: Employment Practices Liability Guide To Risk Exposures & Coverage](#)

[\[PDF\] Ghost: A Guest + A Host = A Ghost](#)

[\[PDF\] Thin Lizzy: The Boys Are Back](#)

[\[PDF\] Macroeconomics: Analysis & Canadian Policy](#)

[\[PDF\] Lilac Blossom Time](#)

[\[PDF\] Hannah Arendt, Totalitarianism, And The Social Sciences](#)

[\[PDF\] Migration And Insecurity: Citizenship And Social Inclusion In A Transnational Era](#)