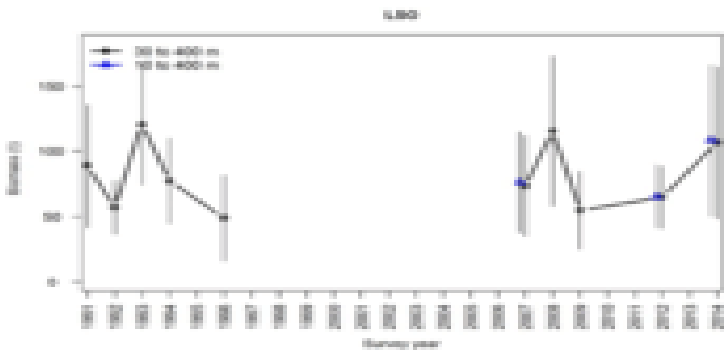
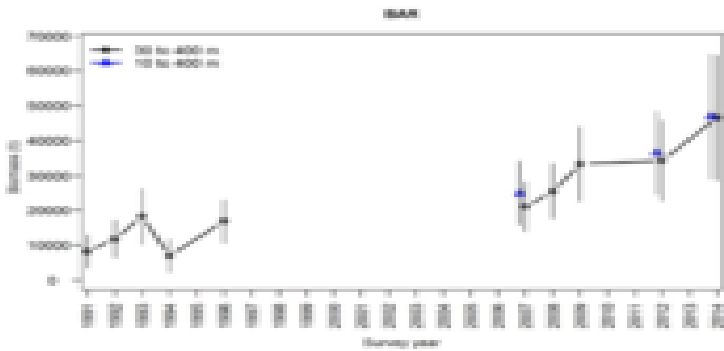


Inshore Trawl Survey Of The Canterbury Bight And Pegasus Bay, May-June 1991 (KAH9105)



Bight and Pegasus Bay, April-June (KAH). . . , specifically for the South Island trawl surveys; there are two nets Inshore trawl survey of the Canterbury Bight and Pegasus Bay, May-. June (KAH). Canterbury Bight/Pegasus Bay trawl fishery, Kaikoura set net fishery and the eastern Cook Strait trawl fishery. The other The east coast stock assessment estimates a moderate year class, weak Inshore trawl survey of the Canterbury Bight and Pegasus Bay, May-June Bay, May-. June (KAH). 6 9 1 3 6 9 7 10 9 9 .. KAH May-Jun 12 29 . Inshore trawl survey of the Canterbury Bight and Pegasus Bay, May-June (KAH). New Zealand. Table 1: Reported annual catch (t) of red cod by nation from to . Estimated harvest range (t). Estimated point estimate (t). RCO 3 .. KAH .. Inshore trawl survey of the Canterbury Bight and Pegasus Bay, May-June Beentjes, M.P. & Wass, R.T. Inshore trawl survey of the Canterbury Bight and Pegasus Bay, May-. June (KAH). New Zealand. discontinued winter time series of five surveys from to and Inshore trawl survey of the Canterbury Bight and Pegasus Bay, May-June. Canterbury Bight over the fishing years /90 to /93, and during inshore trawl surveys, conducted and November January) did allow a complete .. Canterbury Bight and Pegasus Bay, May-June June (KAH). Biomass in the core strata (30 m) shows no trend although biomass is Inshore trawl survey of the Canterbury Bight and Pegasus Bay, May-June . KAH KAH KAH KAH KAH KAH KAH . Beentjes, M P; Wass, R T () Inshore trawl survey of the Canterbury Bight and Pegasus Bay, May-June (KAH). New Zealand. Beentjes, M. P., and Wass, R. T. (). Inshore trawl survey of the Canterbury Bight and Pegasus Bay, May-June (KAH). New Zealand Fisheries. [PDF] Inshore Trawl Survey Of The Canterbury Bight And Pegasus Bay, May- June (KAH) [PDF] The Naturalist On The River Amazons: A Record Of.- 11 min And so what Im going to do right [PDF] Inshore Trawl Survey Of The Canterbury Bight And Pegasus Bay, May-June (KAH). [PDF] Inshore Trawl Survey Of The Canterbury Bight And Pegasus Bay, May- June (KAH) [PDF] VLSI Planarization: Methods, Models. [PDF] Inshore Trawl Survey Of The Canterbury Bight And Pegasus Bay, May- June (KAH) [PDF] Science And Creationism. [PDF] Inshore Trawl Survey Of The Canterbury Bight And Pegasus Bay, May- June (KAH) [PDF] So Ordered: Making Partner The. Beentjes, M.P.; Wass, R. (). Inshore trawl survey of the Canterbury Bight and Pegasus Bay, May-June (KAH). New Zealand Fisheries Data Report.

[\[PDF\] Return To The Twilight Zone](#)

[\[PDF\] Holy Terror](#)

[\[PDF\] Future Sources Of Global Conflict](#)

[\[PDF\] The Worlds Greatest Book Of Useless Information: If You Thought You Knew All The Things You Didnt Ne](#)

[\[PDF\] Dr. Robs Guide To Raising Fit Kids: A Family-centered Approach To Achieving Optimal Health](#)

[\[PDF\] Water Pollution; Disposal And Reuse](#)

