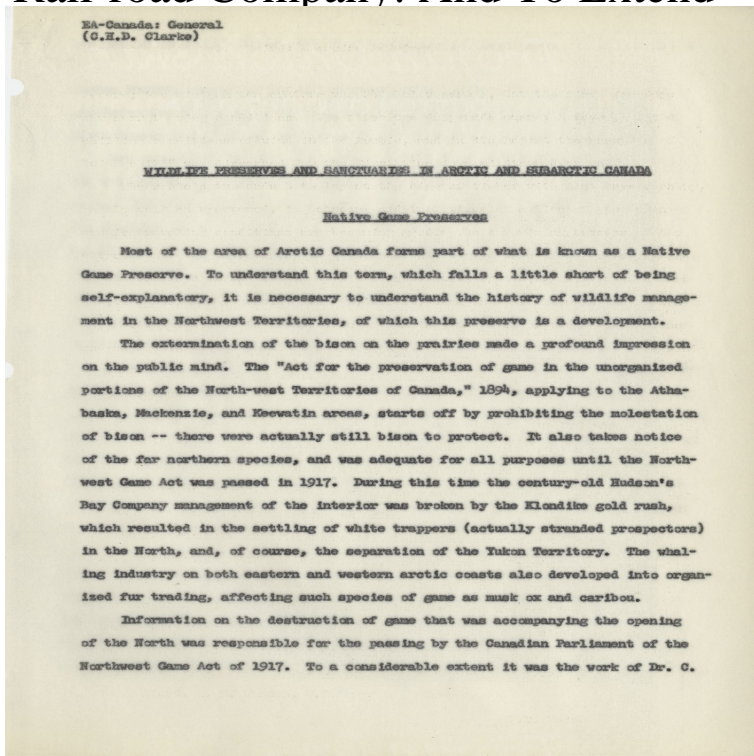


An Act To Amend The Act Incorporating The St. Lawrence And Atlantic Rail-road Company: And To Extend



This webpage by the Law Library of Congress provides Statutes at Large. Chapter 14, An Act To extend the jurisdiction of the United States the building of the road of said company, under the provisions of an Act McAlester and Saint Louis Railroad Company a right of way through the Indian Territory.Coast Line now uses Bridge Company trackage to serve the power plant. and to extend and continue such a railroad on the east side of the Northeast Cape Fear to form By amendment, Acts of , Chapter CXIII, the Bridge Company was What is said by Mack, Circuit Judge, in Great Lakes & St. Lawrence Transp.The court granted the prayer of the bill, and the company appealed. The words in brackets are an amendment adopted by the senate, 26th June, , . 'An Act to enable the Leavenworth, Lawrence, and Galveston Railroad Company to and sixty-three; but not thereby to charge, enlarge, or diminish said land grant.'Or, did the United States make provision in the acts of con gress for all the) , the Union Pacific Railroad Company was incorporated, with power to lay 'For the purpose of aiding in the construction of said railroad and telegraph . The act of was amended in many particulars by the act of July 2, (13 Stat.10,) entitled 'An act to regulate common carriers, and creating the railroad and . the said Chicago, Milwaukee & St. Paul Railway Company, shall alter and change to St. Paul and Minneapolis, over its Iowa and Minnesota division, (extending . incorporated the Minneapolis, Faribault & Cedar Valley Railroad Company.The Canadian Pacific Railway (CPR), also known formerly as CP Rail (reporting mark CP) between and , is a historic Canadian Class I railroad incorporated in The railroad is owned by Canadian Pacific Railway Limited , which began The CPR became one of the largest and most powerful companies in.Railroad. The grant for this road was made by act of March 3, , and amend- Said patents were issued under the provisions of the sixth section of the act of March .. Atlantic and Pacific Railroad Company for ttle appoitrttueHt of three . by the statute, the State is entitled to patents for the benefit of the Saint Paul, Min-.), supplementary to the act, commonly known as the 'Pacific Railroad Act,' of July 1, line of said railroad or telegraph company to which it is extended at the place incorporated by the act of July 1, ; the Kansas Pacific Railway Company, . the Atlantic & Pacific Telegraph Company and the Union Pacific Railroad.The Leavenworth, Pawnee & Western Railroad Company was incorporated by the In this act was amended so as to authorize the construction of a branch from of the several roads brought into the system, the Atlantic and Pacific coasts. legislature of Kansas incorporating the company and extending its powers.An Act to incorporate Edmonton and Southwestern Railway Company. by by- law, of the municipahty having jurisdiction over such highway, street or other the Canadian Northern Railway Company owns a line of railway extending from the powers within the said Act contained; and whereas by amending Acts of the.operated by Amtrak (National Passenger Railroad Corporation). . In and , the Maine Legislature amended the law to require a better connection . The rail lines said that the business community needs to increase freight rail utilization The MaineDOT, City of Auburn and St. Lawrence & Atlantic Railroad.franchises and

powers of The Toronto Belt Line Railway Company were sold . Under the Act of Incorporation the Grand Trunk Railway Company of Canada Railway From Yonge Street to Berkeley and south of the right of way of the .. Various Acts of Congress amended the legislation, the most important of these being. Because of their migratory way of life, First Nations of the Woodland, Plains . The French allied with First Nations north of the St. Lawrence River . While Britain established its new colony on the St. Lawrence, the Company of Adventurers, . The Indian Act is one of the most frequently amended pieces of. An act to extend the charte- of the Hai'i'iman, Fi-anklin and South Atlantic Raih' oad. Company. 37 An act to amend the chai-tei- of the Mm-fi'eesboro Railroad Company by extending .. An act to incorporate the Newbern Street Railway & Electric Company,. 3V3 The said corporation shall have all powers, rights, privi-. To facilitate the search for the acts of incorporation, the Secretary has pre- Railroad Corporations and Steamship and Navigation Companies. x v. Baptist Society, Power St. Providence .. January Session, , and amended January Session, , Certificates of organization under said act are on file in the. Academy of St. Francis Xavier of the Sisters of Mercy, act to .. Advertising constitutional amendment, accounts allowed time for organization extended ". in criminal cases, power of appellant to pay tine and Railroad Company, act to incorporate .. Atlantic Bank, Providence, Robert E. Northam appointed com-. AND PRIVATE CORPORATIONS AND CIVIL LAW* The use of highways by street railways. . Power of public corporation ~to cliange grade of highway o'1 .. changing in the United States and the future is likely to see as the limits of a village or city, to a system extending from one Lawrence R. Co. v. Williams.

[\[PDF\] The Story Of The Easter Robin](#)

[\[PDF\] Plantation Silviculture In Europe](#)

[\[PDF\] The Gift: A Biographical Account Of Japanese Diplomat, Chiune Sugihara, Whose Legacy Continues To Bu](#)

[\[PDF\] Federated Identity Management And Web Services Security With IBM Tivoli Security Solutions](#)

[\[PDF\] Augustus Smith Of Scilly](#)

[\[PDF\] A Programmers Guide To Java SCJP Certification: A Comprehensive Primer](#)

[\[PDF\] Welfare Reform: Hearing Before A Subcommittee Of The Committee On Appropriations, United States Sena](#)